

# How to find your IP address

## 1 HOW TO FIND YOUR IP ADDRESS

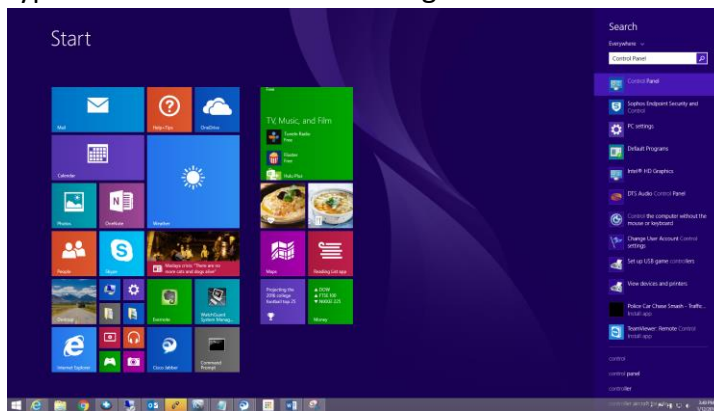
---

### Cause:

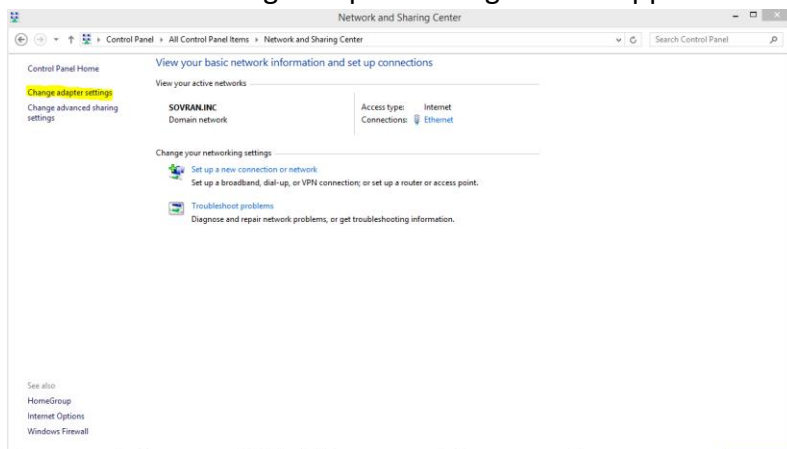
Computer cannot connect to internal network, or internet-Need IP address for troubleshooting

### Resolution/Things to Check:

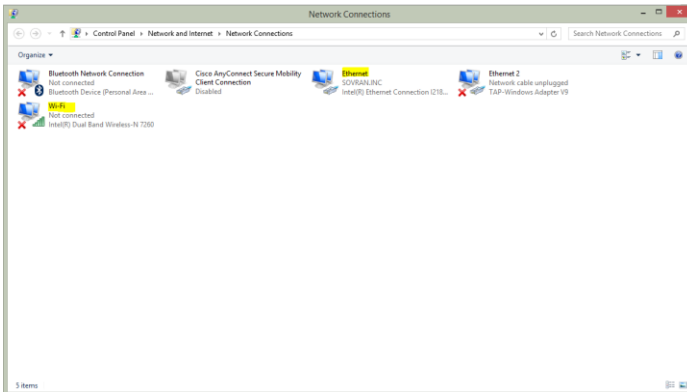
1. Click on the start button and go to Control Panel. In Windows 8 or 10 you will need to type "Control Panel" after hitting the start button.



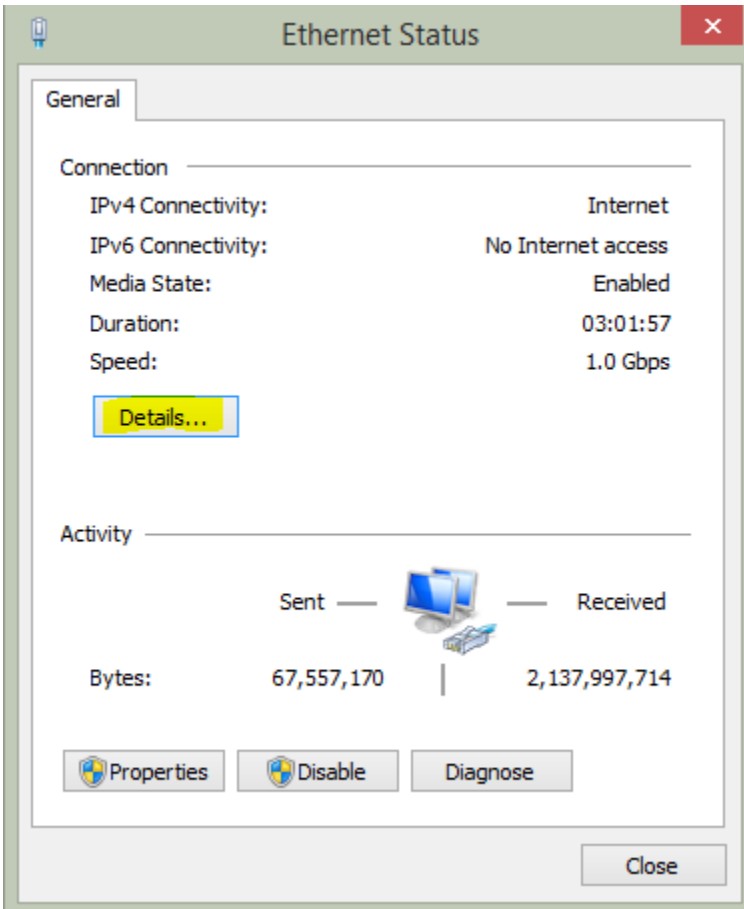
- 2.
3. In control panel, double-click on "Network and Sharing Center"
4. Then click on "Change adapter settings" in the upper left corner



5. In “Network Connections”, double-click on your connection: Ethernet/Wi-Fi



6. In “Ethernet Status”, click on the “Details...” button



7. Your IPv4 Address is what we need please.

DHCP Enabled Yes

8. IPv4 Address 192.168.112.85